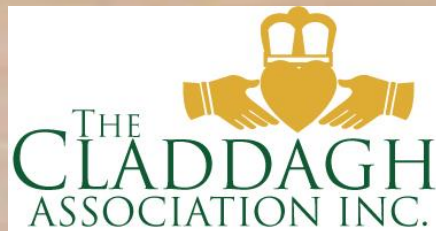


# Returning to Ireland



Government of Ireland  
Emigrant Support Programme



An tBoinn Gnáthai Eacshrachta agus Trádála  
Department of Foreign Affairs and Trade

cross  care

migrant project



# This presentation will cover

1

**Emotional Wellbeing**



2

**Accommodation,  
Employment, Transport  
& Health**



3

**Financial issues**



4

**Returning with Partners  
& /or Kids**

**1**

# **Emotional wellbeing**

Ensuring the move gives long term happiness



# Leaving Australia

- Emotional happiness with the decision
  - Why are you leaving?
  - Feeling sure?
  - Deal breakers?
  - Trial at home?

*Purpose makes it possible*

- Celebrating the Oz experience
  - Farewelling friends
  - Budget for last experiences
  - Grieving Oz



# Returning to Ireland



- Be organised - list tasks and document them
- Reconnect with friends and family
- Reverse culture shock
- Plan and budget for happy experiences
- Surprising reactions
- Be kind to yourself



2

# Accommodation, Employment, Transport & Healthcare

Ensuring stability

# Accommodation in Ireland



- Renting
  - Availability limited, Rents still rising
    - Latest figures show average €1366/month
    - consider location
    - Bring landlord references, 2 months deposit
    - Arrange 2-3 months accom in advance
- Buying
  - Irish Times Abroad articles on mortgages
  - 57 or over?
    - If born in Ireland/don't own home Safe Home Ireland assist with sourcing accommodation

# Employment in Ireland



- Eligible for Jobseekers Allowance while searching
  - Check [Crosscare's tips](#)
- Unemployment at [10 year low](#) of 5.4%
  - Demand in urban areas and some sectors (finance, IT, healthcare pharma, construction)
- Check your [qualifications](#) are recognised in Ireland
  - If construction qualifications check [Solás](#) (further ed & training)
- Start your job search from Australia – [JobsIreland](#), [Indeed](#), [cpl recruitment](#)
- Don't be put off by lack of response



# Transport in Ireland



- Australian licence can be used for up to one year
  - As normal resident you can exchange or apply for Irish licence
- Insurance can be expensive
  - Bring proof of claims-free driving abroad
  - Insurers have committed to taking this into account
  - Shop around

# Healthcare in Ireland



- Access health services immediately once ordinarily resident
- Low income earners are entitled to medical card
- Under 6 and over 70 entitled to GP visit card
- If outside Ireland more than 6 months you have a grace period of 9 months to purchase health insurance without incurring loading fees for time outside state

# 3

## **Financial Issues**

Legal requirements



# Leaving Australia

- Work out your tax status & tax return obligations
  - Residency and Australian tax
- HELP and TSL debts remain active
  - Update your details on MyGov
  - Submit overseas travel notification
  - Complete annual tax return
- Superannuation
  - Find your super accounts on mygov
  - Applicable residency rules
    - working holiday visa = 65%tax, 457 visa =38% tax,
    - permanent residence and citizens may not withdraw
  - Decide - withdraw or manage?



# Returning to Ireland

- Be aware of double taxation treaty
- Don't be scared to talk with Revenue
- Social welfare
  - Seeking employment, disability, single parent, retiree, low income, children under 18
  - Must satisfy means test
  - Must satisfy Habitual residence
    - Prove that you are resuming residence and Ireland is your main centre of interest
    - Complete HRC1 form, collect Documentary evidence (eg ending tenancy, closing bank account)
    - Cover letter with details
    - **Keep copies** of everything

4

# Returning with partners and/or kids

Logistics



# Returning with **de facto partner**

- Your Australian de facto partner must apply for and be granted pre-clearance before coming to Ireland.
  - Collect documents to prove that you have lived together for two years and that show your relationship history
  - These could be things like your marriage cert, joint holiday bookings, photos, joint bank account statements and utility bills.
  - These will be needed during the pre-clearance process

# Returning with **civil partner** **or spouse**



- Your Australian civil partner or spouse doesn't need a visa to enter Ireland
  - At immigration control they will have to declare that they intend to apply for residency based on your relationship
- Collect docs that provide a full account of your relationship history
  - These could be things like your marriage cert, joint holiday bookings, photos, joint bank account statements and utility bills.
  - An officer may request these documents at immigration control and you will need them when you apply for residency



# Returning with children



- Before you go back:
  - Apply for child's Irish passport using APS2 form if they don't have one
    - Forms at [Claddagh](#) or the Irish consulate
  - [Apply for a school place](#) – depends on admissions policy
    - Find schools at [www.education.ie](http://www.education.ie)
  - Print your child's immunisation statement from your Medicare online account through [my.gov.au](http://my.gov.au)
- Once in Ireland
  - [Apply for PPS number](#)
  - [Apply for Child Benefit](#) (€ 140/child/month)
  - Get free [GP visit card](#) for children under 6
  - Take advantage of the [Early Childhood Care and Education Scheme](#)
  - Investigate [childcare options](#)
  - If necessary apply for [Special Needs assessment or Assistance](#)

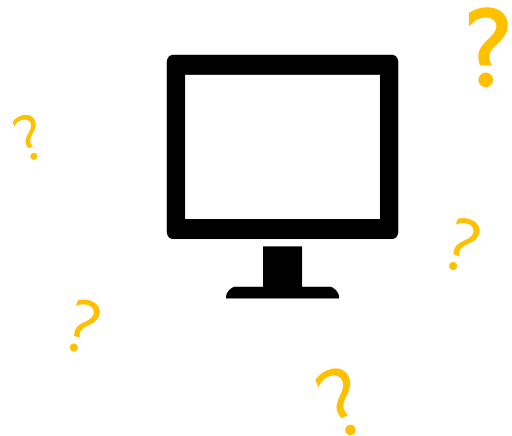
# Qns & Follow-up

Any questions?

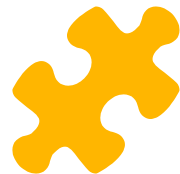
More detailed info needs?

Please contact Anne Wayne, Claddagh coordinator ([admin@claddagh.org.au](mailto:admin@claddagh.org.au)) and let us know if you would like us to arrange online appointments with experts in:

- Superannuation
- conditions in Ireland
- visa issues
- or anything else you need help with.



# Useful resources



## Publications

- [Indecon Economic Report on Addressing Challenges Faced by Returning Irish Emigrants](#)

2018 report highlighting barriers to return and suggesting solutions

- [Home for Good](#)

A 2017 report on the experiences of 400 recently returned Irish emigrants

- [Crosscare Blog post](#)

Update about Brexit & return migration

## Websites

- [Crosscare Migrant Project](#)
- [Citizens Information](#)
- [Global Irish](#)

Returning to Northern Ireland:

- [NI Direct](#) -Government Services website
- [Advice Northern Ireland](#)
- [Citizens Advice Northern Ireland](#)
- [Border people](#)

## Networking organisations

- [The Irish Times Abroad Network](#)
- [Ireland Move Club](#)
- [Irish International Business Network](#)
- [Irish expats returning to Ireland- Facebook group](#)

# About us



Government of Ireland  
Emigrant Support Programme



An Boim Gnídhal Eacchracha agus Trídála  
Department of Foreign Affairs and Trade



- Established in 1997 to support people from the Irish Community in Western Australia.
- Committee and volunteers give their time voluntarily to carry out the mission
- Non profit with gift recipient status. Funded by the Govt of Ireland's Department of Foreign Affairs and Trade: Emigrant Support Programme & by donations from supporters.
- Accept referrals from anyone. Many referrals come from the Irish Embassy in Canberra.
- Examples of our work include repatriation of bodies to Ireland, information about migration issues, crisis financial support, prison visits, social outings for Irish Seniors.
- W:[claddagh.org.au](http://claddagh.org.au) E: [admin@claddagh.org.au](mailto:admin@claddagh.org.au)

- The Crosscare migrant project assisted Claddagh with information and support during the Claddagh's Returning to Ireland project.
- Crosscare are a Dublin based nonprofit funded by the Govt of Ireland's Department of Foreign Affairs and Trade: Emigrant Support Programme
- Support intending and returning Irish emigrants
- Provide information about emigration and return migration
- Advocate for people denied access to Irish statutory supports or with complex needs
- Carry out research and policy work to raise awareness of issues affecting Irish emigrant
- Provide capacity building support to Irish emigrant organisations worldwide
- W:[migrantproject.ie](http://migrantproject.ie) E:[migrantproject@crosscare.ie](mailto:migrantproject@crosscare.ie)